



goodweave®

Benefits of GoodWeave's licensing and certification programme for rug and home textile importers

January 2022

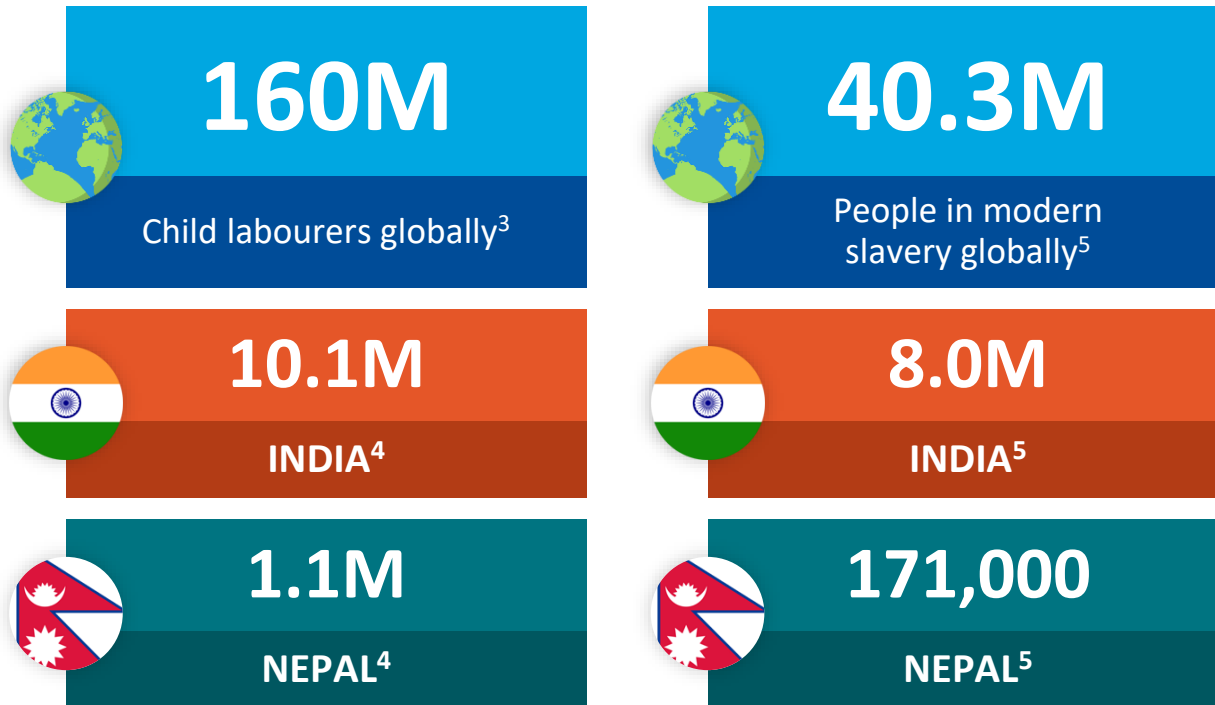


Our mission

GoodWeave's mission is to stop child labour in global supply chains. Permanently.

GoodWeave brings visibility to global supply chains; protects informal and marginalised workers; provides assurance that products are free of child, forced and bonded labour; and restores childhood to vulnerable children so they can laugh, learn and play.

Child, forced and bonded labour are widespread in global supply chains

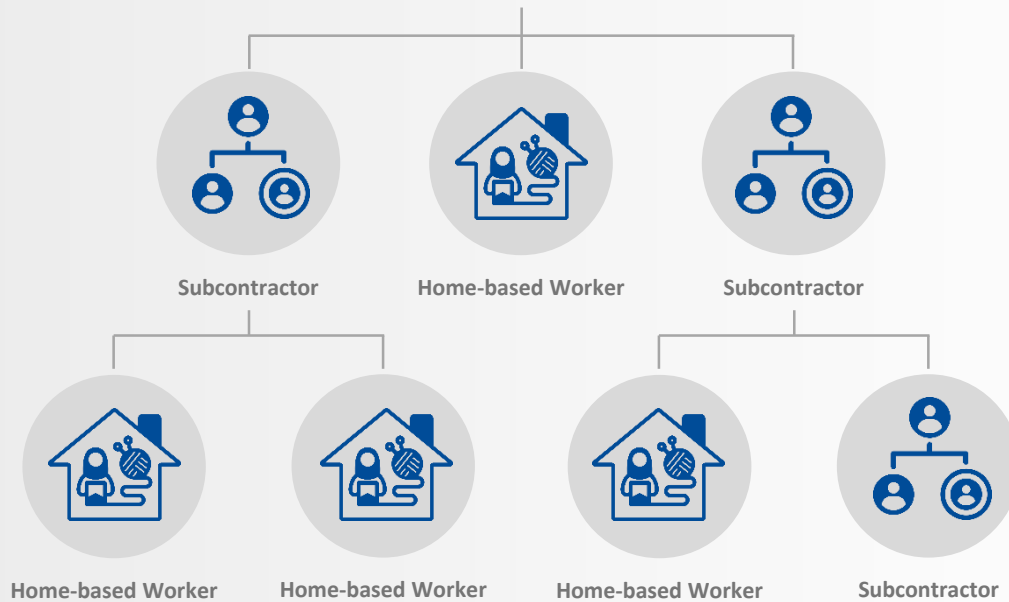


Child and forced labour is documented in 156 products in 77 countries, including rugs (carpets), embellished textiles, fashion accessories, garments, leather goods and textiles.¹

There is widespread exploitation in outsourced supply chains, including in subcontracting facilities and home-based worksites.²

Global progress against child labour has stalled, and is likely to push a further 8.9 million children into labour as a result of rising poverty driven by the COVID-19 pandemic.³

In the rug industry, children sit at looms for up to 14 hours per day, often performing hazardous tasks, with no access to education. Some are trafficked – under threat of violence – to work off a family debt that can never be repaid on meager wages.²



Exploitation in subcontracted production is a risk to your business

Child, forced and bonded labour are crimes under national and international laws. Businesses associated with these forms of exploitation risk detained shipments at ports of entry, class action lawsuits, sanctions and public exposure.

Human rights supply chain due diligence legislation is increasing, and requires full supply chain oversight and remediation. Most compliance programmes do not provide due diligence beyond the primary factory and do not include protection for victims.

Prevention efforts are lacking, but essential. Investments to strengthen workers' rights and well-being ensure compliant and stable supply chains.

Deep supply chain due diligence that stops child, forced and bonded labour



Deep Supply Chain Mapping

GoodWeave maps the complete supply chain, from primary manufacturing facilities to outsourced production, including home-based sites.



Inspection and Monitoring

GoodWeave conducts initial audits and random, unannounced inspections, measured against the [GoodWeave Standard](#).



Remediation

GoodWeave offers remedy to child and adult victims of exploitation and works with suppliers to improve conditions.



Prevention

GoodWeave implements programmes in producer communities to address the root causes of child labour and ensure children have access to education. Programmes also address health and conditions of work for adults.

Certification: the GoodWeave label

Becoming a **GoodWeave licensee** is the best assurance your imported rugs and home textiles are made free of child, forced and bonded labour.

A unique **GoodWeave numbered label** on your products provides customers proof of certification and your ethical credentials. Licensed partners have access to a promotional toolkit to help communicate about their commitment, and are included in GoodWeave's [online directory listing](#).



HOW TO BECOME A LICENSED IMPORTER

Importer signs license agreement

1

Suppliers apply for licensing and undergo an initial audit to assess compliance with the GoodWeave Standard

Applications are reviewed and approved by the GoodWeave Certification Division

2

Unannounced inspections are carried out

Non-compliances are identified and addressed

3

Licensed suppliers receive labels prior to shipment

Importer receives labelled products

4

Business benefits

- **Comply with transparency, modern slavery and [human rights legislation](#)** by achieving full visibility across high-risk production sites outside traditional audit oversight
- **Avoid risk of shipment seizures:** U.S. Customs and Border Protection has detained 696 shipments (Oct 2020-June 2021) for suspicion of goods made with forced labour, including trafficked child labor
- **Advance corporate sustainability agenda** towards [Sustainable Development Goal 8.7](#) to end all forms of child labour by 2025
- **Gain “peace of mind”** that products are not made with child, forced or bonded labour through GoodWeave’s certification
- **Improve working conditions** in supply chains and producer communities through remediation and social programme implementation
- **Enhance reputation and make products your customers feel good about buying**
- **Retain and motivate employees** that are proud to work for a company with a broader mission



Our credibility



GoodWeave is a nonprofit organisation founded in 1994 by Nobel Peace Prize Laureate Kailash Satyarthi

An independent, global organisation with teams in the US, Europe and Asia

GoodWeave is [ISEAL](#) Code Compliant. Our system has been independently evaluated against ISEAL's Codes of Good Practice—a globally-recognised framework for effective, credible sustainability systems.



GoodWeave is a member of [Ethical Trading Initiative](#) and [German Partnership for Sustainable Textiles](#).

GoodWeave's CEO has been awarded the Skoll Award for Social Entrepreneurship and the Schwab Foundation Award for Social Entrepreneurs.

Our donors



Ministry of Foreign Affairs of the Netherlands

SEAMONT
FOUNDATION



The
West
Foundation

Janet Wright Ketcham Foundation

Laudes ———
—— Foundation



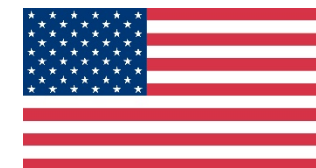
UBS Optimus
Foundation



UBS



HUMANITY
UNITED



Funding provided by the United States Government

185+ brand partners in 19 countries

THE
RUG
COMPANY
HANDMADE

jacaranda
CARPETS & RUGS

NEW MOON™



WARP & WEFT

★ macy's

company


OTTO

The GoodWeave difference



YES



IN SOME CASES

GOODWEAVE
INTERNATIONAL

FACTORY SELF
MONITORING

3RD PARTY
MONITORING

OTHER NGO SUPPLY
CHAIN INITIATIVES

Supply chain monitoring at Tier One



Supply chain mapping and monitoring of subcontracted and home-based worksites beyond Tier One



ISEAL Code Compliant



Comprehensive remediation and rehabilitation of child, forced and bonded labour

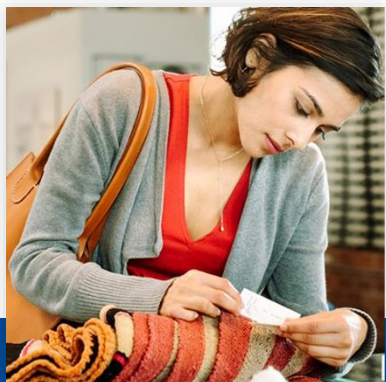


Social programmes and presence in worker communities



The GoodWeave System and impact

25+ years partnering with companies to create child-labour-free supply chains through a market-based system and holistic approach



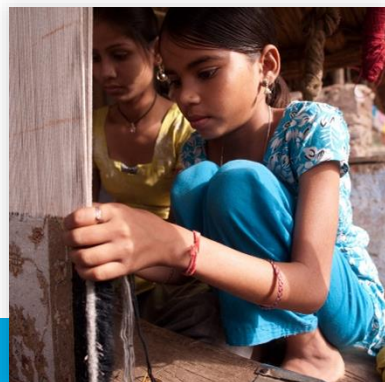
HARNESS MARKET FORCES

185+ brand/company partners

Programmes in rugs, home textiles, apparel, and other sectors

32+ million products certified

1



CLEAN UP SUPPLY CHAINS

5,000+ active worksites in GoodWeave inspected supply chains

8,900+ children rescued from child labour

2



CREATE EDUCATIONAL OPPORTUNITIES

44,000+ children provided educational opportunities

55 Child-Friendly Communities created

3



IMPROVE CONDITIONS FOR ALL WORKERS

99,000+ workers protected under the GoodWeave Standard in 2021

4



PROMOTE BEST PRACTICES

Partnership and capacity building projects: apparel in Bangladesh, bricks in Nepal, tea in India

5

What our licensed partners say

Over 90% say they joined GoodWeave because of a commitment to ending child labour.

Over 80% say GoodWeave's partnership has enhanced their company's reputation.

50% say their customers ask how they are ensuring child labour is not used in the making of their products.



GoodWeave PSA's in major publications educate consumers about the programme and contribute to enhancing partner's reputations

“

Creating a beautiful product for 'work' is great, but when you are assured the best possible practices go into making your product, 'work' becomes passion. GoodWeave allows us to feel good about the products we sell.

”

Paige Sowden
Owner of Interior Resources

“

By partnering with Goodweave, we are working hand in hand with the organization to address underage labor and remediate cases of underage labor when found in the rug industry. It's critical that our guests feel confident they can purchase responsibly at Target, and we thank Goodweave for their partnership and continued drive toward an incredibly important mission.

”

Amanda Tucker
VP of Responsible Sourcing and Sustainability, Target



INCREASED VISIBILITY, INCREASED IMPACT:
STORIES OF CHANGE

Mapping a large retailer's supply chain

When a large importer signed up as a GoodWeave licensee, its rug supplier list included 22 units.

The importer had a compliance programme in place, but no visibility into outsourced production.

Over a period of three years, GoodWeave mapped 1,386 outsourced production units in their supply chain and identified 120 child labourers.

INCREASED VISIBILITY, INCREASED
IMPACT: **STORIES
OF CHANGE**

Sumitra's story

Sumitra's parents wanted to enroll her in school in Kathmandu, but they were unable to bear the cost of admission and other educational expenses.

Instead of going to school, Sumitra began to do some household work and soon she was weaving alongside her relatives in a factory.

Thanks to GoodWeave, Sumitra is now back in school and dreaming of becoming a nurse.

[Read her story here.](#)





Frequently asked questions

Q. What are the costs of GoodWeave's licensing and certification programme?

Under the licensing and certification programme, the importer pays 1.75% of the EXW value of every shipment of GoodWeave-labelled goods, capped at 105,000 USD/year. The exporter pays 0.25% of the EXW value and is not capped. In both cases, the fee is only applicable to certified goods. For goods that are not labelled, a different licensing fee applies. Please contact us for more information.

Q. What is GoodWeave's approach to capacity building?

With the [GoodWeave System](#) tested and proven as an effective model for combating child labour, we are expanding our reach by focusing on capacity-building efforts and promoting best practices. We know that to achieve our mission of stopping child labour, we must accelerate efforts, create partnerships, and spur the uptake of our successful model in new sectors and geographies. As such, we work with nongovernmental organisations (NGOs) and companies, building and strengthening stakeholders' skills and abilities to adapt and apply elements of our model.

Q. What are the GoodWeave Standard requirements?

The Standard is comprised of three Principles: 1) No child labour is allowed, 2) No forced or bonded labour is allowed, and 3) Conditions of work are documented and verifiable. It also includes Progress Principles, which are designed to address a broader range of labour and environmental issues, but are not required for certification.

Q. Can you modify your programme requirements? For example, I want to become a licensee, but do not want to label rugs and home textiles.

No, GoodWeave's certification programme for rugs and home textiles follows a rigorous process based on specific scope, claim and labelling requirements.

Q. How do I know if there is outsourcing in my production?

Outsourcing is common in the rug, home textile and apparel sectors in India, Nepal and other South Asian countries. The GoodWeave team is skilled at working with exporters to build trust that leads to disclosure of subcontracted worksites.



**Become a GoodWeave partner.
Doing the right thing for your
business has never been easier.**

Contact us today to learn more.

partnerships@goodweave.org

goodweave.org