

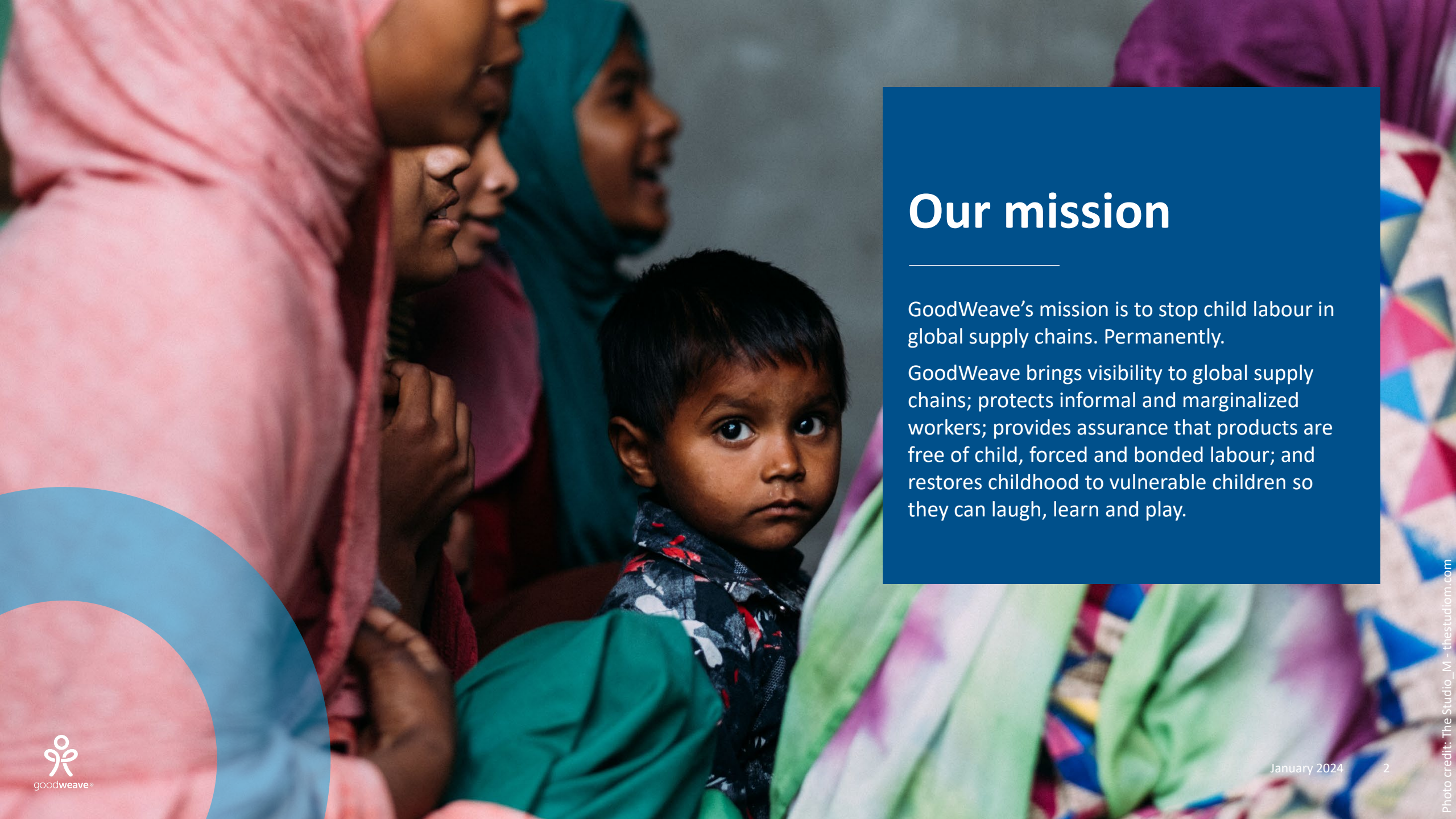


goodweave®

Benefits of GoodWeave's licensing and certification programme for exporters in Nepal

January 2024



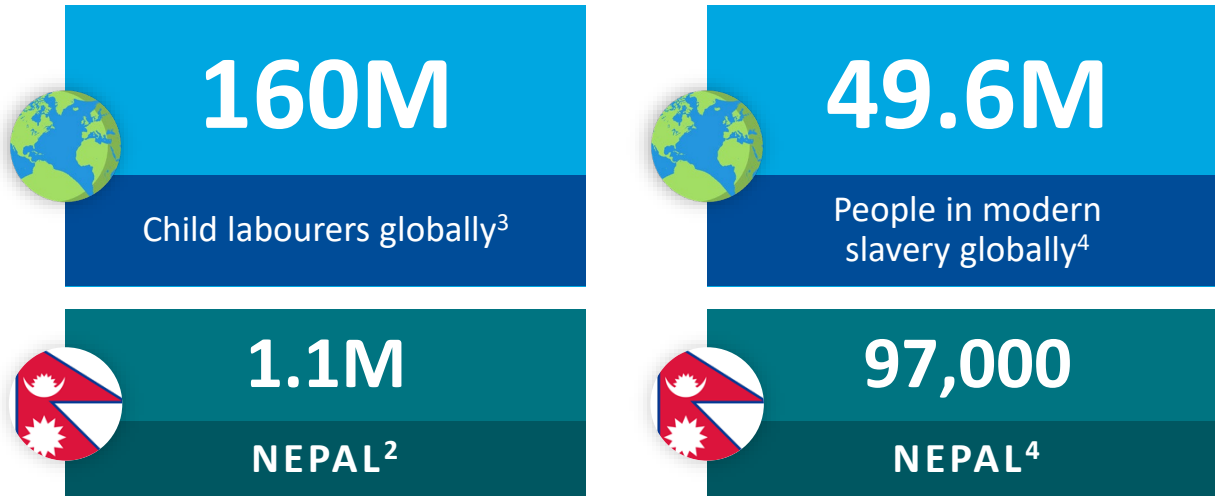


Our mission

GoodWeave's mission is to stop child labour in global supply chains. Permanently.

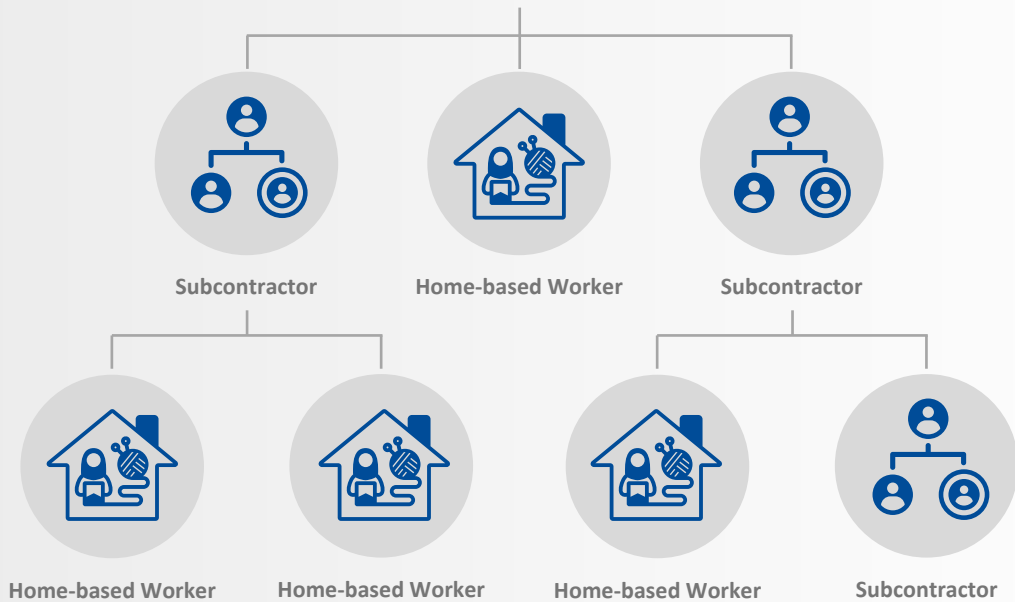
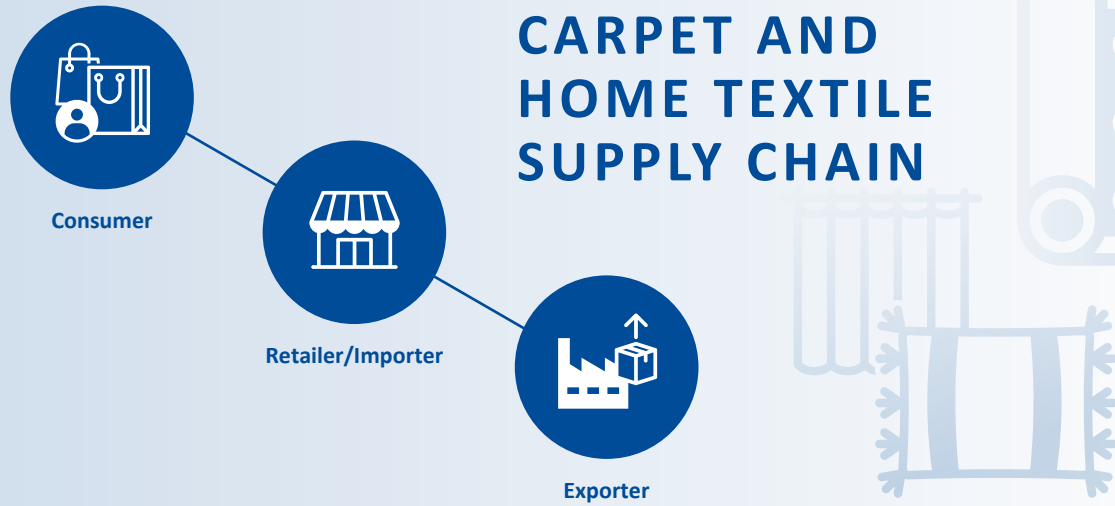
GoodWeave brings visibility to global supply chains; protects informal and marginalized workers; provides assurance that products are free of child, forced and bonded labour; and restores childhood to vulnerable children so they can laugh, learn and play.

Child, forced and bonded labour are widespread in global supply chains



Exporters work hard to make sure their supply chains are transparent and that factories are operating under safe and ethical conditions. However, there is still widespread exploitation in outsourced supply chains, including in subcontracting facilities and home-based worksites.¹

In Nepal, the informal sector makes up 62% of the workforce. Many production processes are outsourced for capacity and cost related efficiencies.²



Exploitation in subcontracted production is a risk to your business

Child, forced and bonded labour are crimes under national and international laws. Suppliers associated with these forms of exploitation risk public exposure and loss of business.

Buyers are seeking further assurance against exploitation in their supply chains due to consumer pressure and increasing human rights due diligence legislation that requires full supply chain oversight and remediation.

Prevention and remediation efforts are lacking, but essential. It is difficult to have oversight of sub-contracted tiers of production, and monitoring efforts alone do not solve the problem without preventative measures and remediation.

Deep supply chain due diligence that stops child, forced and bonded labour



Deep Supply Chain Mapping

GoodWeave maps the complete supply chain, from primary manufacturing facilities to outsourced production, including home-based sites.



Inspection and Monitoring

GoodWeave conducts initial audits and random, unannounced inspections, measured against the **GoodWeave Standard**.



Remediation

GoodWeave offers remedy to child and adult victims of exploitation and works with suppliers to improve conditions.



Prevention

GoodWeave implements programmes in producer communities to address the root causes of child labour and ensure children have access to education. programmes also address health and conditions of work for adults.

Certification: the GoodWeave label

Becoming a **GoodWeave licensee** is the best assurance your imported carpets and home textiles are made free of child, forced and bonded labour.

A unique **GoodWeave numbered label** on your products provides customers proof of certification and your ethical credentials. Licensed partners have access to a promotional toolkit to help communicate about their commitment, and are included in GoodWeave's **[online directory listing](#)**.



HOW TO BECOME A LICENSED IMPORTER

Importer signs license agreement

1

Suppliers apply for licensing and undergo an initial audit to assess compliance with the GoodWeave Standard

2

Unannounced inspections are carried out

Non-compliances are identified and addressed

3

Licensed suppliers receive labels prior to shipment

Importer receives labeled products

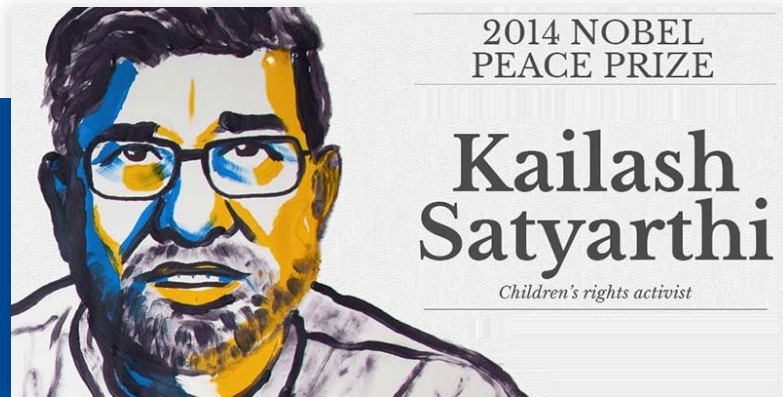
4

Business benefits

- **Supply chain transparency:** Gain full visibility into your supply chains and take necessary corrective action to eliminate child, forced, and bonded labour with GoodWeave's support
- **Competitive advantage:** programme participation is regarded positively by brands as they face increasing pressure to comply with international human rights supply chain due diligence legislation
- **A more stable workforce:** GoodWeave's programme brings free services to worker communities, all with the goal to make permanent changes that prevent exploitation and improve quality of life
- **Support children's education:** GoodWeave implements community-level education programmes that address the root causes of child labour



Our credibility



GoodWeave is a nonprofit organisation founded in 1994 by Nobel Peace Prize Laureate Kailash Satyarthi

An independent, global organisation with teams in the US, Europe and Asia

GoodWeave is [ISEAL](#) Code Compliant. Our system has been independently evaluated against ISEAL's Codes of Good Practice—a globally-recognized framework for effective, credible sustainability systems.



GoodWeave is a member of [Ethical Trading Initiative](#) and [German Partnership for Sustainable Textiles](#) and an ambassador for the [Dutch Fund against Child Labour](#).¹

GoodWeave's founding CEO has been awarded the Skoll Award for Social Entrepreneurship and the Schwab Foundation Award for Social Entrepreneurs.

Our donors



Netherlands Enterprise Agency

SEAMONT
FOUNDATION



The West
Foundation

Janet Wright Ketcham Foundation

Laudes ———
—— Foundation



UBS Optimus
Foundation



Funding provided by the United States Government

195+ brand partners in 22 countries

THE
RUG
COMPANY
HANDMADE

jacaranda
CARPETS & RUGS

NEW MOON™

company


WARP & WEFT

 macy's

OTTO

The GoodWeave System and impact

Nearly 30 years partnering with companies to create child-labour-free supply chains through a market-based system and holistic approach



HARNESS MARKET FORCES

195+ brand partners

Programmes in carpets, home textiles, apparel, and other sectors

38+ million products certified

1



CLEAN UP SUPPLY CHAINS

8,000+ active worksites in GoodWeave inspected supply chains

10,300+ children freed

2



CREATE EDUCATIONAL OPPORTUNITIES

81,000+ children directly provided educational opportunities

35 Child-Friendly Communities created

3



IMPROVE CONDITIONS FOR ALL WORKERS

110,000+ workers protected under the GoodWeave Standard in 2023

4



PROMOTE BEST PRACTICES

Partnership and capacity building projects: apparel in Bangladesh, bricks in Nepal, tea in India

5

What our licensed partners say

Over 90% say they joined GoodWeave because of a commitment to ending child labour.

Over 60% say GoodWeave's partnership has enhanced their company's reputation.

56% say their customers ask how they are ensuring child labour is not used in the making of their products.



GoodWeave PSA's in major publications educate consumers about the programme and contribute to enhancing partner's reputations

“ One of our major clients is a GoodWeave licensee, since they know about our GoodWeave certification, the flow of orders from them is continuous and substantial. Additionally, the reputation and credibility Indian exporters have through GoodWeave is evident when we attend international exhibitions. Buyers we have never worked with come to our booth, knowing that we are socially responsible and working towards better working conditions for our workers. ”

Rupesh Nagar
JR Exports, Bhadohi

“ Our association with the GoodWeave programme is unique because it ensures in-depth transparency in our supply chains and also enhances our credibility at global platforms. We appreciate GoodWeave's exclusive approach about stopping child labour and supporting at-risk children along with sensitizing global consumers for opting child labour free products. ”

Rajendra Kumar Rawat
Manglam Arts, Jaipur



A woman in a red and white patterned sari is smiling and looking towards the right. She is operating a spinning wheel. In the background, another woman in a blue and white sari is also working. The setting appears to be a textile factory or workshop with stone walls.

INCREASED VISIBILITY, INCREASED
IMPACT: STORIES OF CHANGE

Mapping a large retailer's supply chain

When a large importer signed up as a GoodWeave licensee, its carpet supplier list included 22 units.

The importer had a compliance programme in place, but no visibility into outsourced production.

Over a period of three years, GoodWeave mapped 1,386 outsourced production units in their supply chain and identified 120 child labourers.

INCREASED VISIBILITY,
INCREASED IMPACT: **STORIES
OF CHANGE**

Sumitra's story

Sumitra's parents wanted to enroll her in school, but they were unable to bear the cost of admission and other educational expenses.

Instead of going to school, Sumitra began to do some household work and soon she was weaving alongside her relatives in a factory.

Thanks to GoodWeave, Sumitra is now back in school and dreaming of becoming a nurse.

[Read her story here.](#)



Frequently asked questions

Q. What are the costs of GoodWeave's certification programme?

The importer pays 1.75% of the EXW value of every shipment of labeled goods, capped at 105,000 USD/year. The exporter pays 0.25% of the EXW value and is not capped. In both cases, the fee is only applicable to certified goods.

Q. What are the GoodWeave Standard requirements?

The Standard is comprised of three Principles: 1) No child labour, 2) No forced or bonded labour, and 3) Conditions of work are documented and verifiable. It also includes Progress Principles, which are designed to address a broader range of labour and environmental issues, but are not required for certification.

Q. I do not employ children in my factories. Why should I join?

In GoodWeave's experience, most child, forced and bonded labour issues are identified in subcontracted supply chains. As international due diligence legislation becomes stricter, there is more pressure on companies to have full visibility into their supply chains and to ensure issues like child, forced and bonded do not exist, including at subcontracted worksites. GoodWeave's programme helps exporters gain oversight of subcontracted tiers of production and reduce child and forced labour risk.



goodweave®

**Become a GoodWeave partner.
Doing the right thing for your
business has never been easier.**

Contact us today to learn more.

samjhana@goodweave.org

